

Shire Valley Transformation Programme (SVTP-1): ‘Transforming Subsistence Agriculture into Commercial in the Shire Valley’

SVTP Quick Facts

Phase 1 Project Cycle: 2018-2023
Implementer: Ministry of Agriculture
Targeted Districts: Chikwawa, Nsanje
Total Length of Canal: 112kms
Total Hectarage: 43,370 hectares
Beneficiary Households: 48,400

Project Funders

World Bank: US\$ 160 million
African Development Bank (AfDB): \$50 million
Government of Malawi: \$7.2 Million
Global Environment Facility (GEF): \$5.6 million

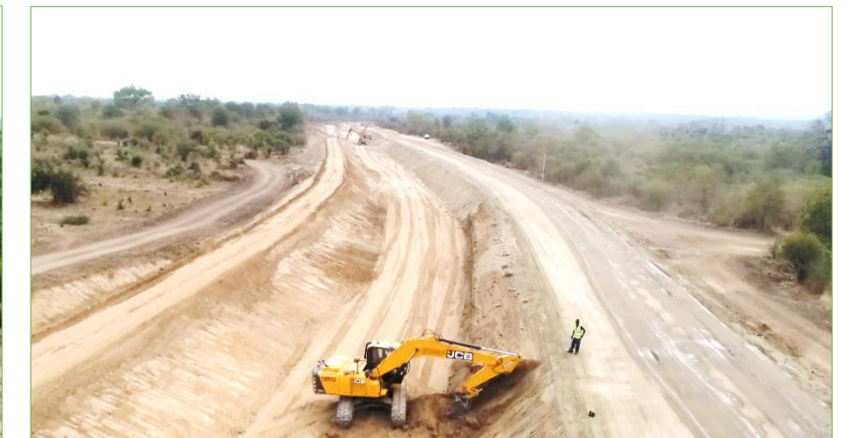
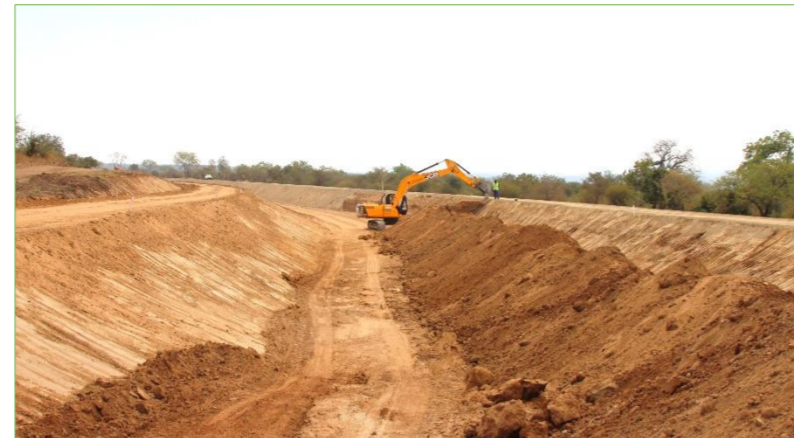
The Shire Valley Transformation Programme (SVTP) is a 14-year Government of Malawi Programme aimed at increasing agricultural productivity and commercialization for targeted households in the Shire Valley and to improve the sustainable management and utilization of natural resources. The objective of the first phase of the Programme (2018 to 2023) is to provide access to reliable irrigation and drainage services, secure land tenure for smallholder farmers and strengthen management of wetlands and protected areas in the Shire Valley.

Construction of Phase 1 of the Shire Valley Irrigation Scheme commenced in April, 2020 with the construction of the Intake and the first six kilometers of the Main Canal. This will take 30 months to be completed. Procurement of a contractor to construct the remaining 46kms of Phase 1 Main Canal from 6kms up to Lengwe National Park is currently in progress.

Some key highlights on progress:

- ✓ Completed clearing of the whole six-kilometre of canal alignment, of which 1.5kms has been excavated and shaped into trapezoidal form;
- ✓ Cofferdam construction is in progress. Contractor currently working on several structures on the canal route including a siphon, 5 drainage structures and a bridge;
- ✓ MK 1.3 Billion in compensations paid out to 1,267 project affected persons;
- ✓ Supported the Ministry of Lands in development subsidiary legislations for the new land laws;
- ✓ The Chikwawa District Physical Development Plan was displayed and endorsed at district level. It is awaiting approval by the Commissioner of Physical Planning;
- ✓ 31 local land use plans were prepared and approved;
- ✓ Seven (7) Customary Land Tribunals for 7 Traditional Land Management Areas (TLMAs) have been nominated and waiting for appointment by the Commissioner of Lands;

- ✓ The District Land Tribunal has been appointed by the Chikwawa District Council;
- ✓ 107 GBV Champions identified and trained to handle issues of gender-based violence in collaboration with GBV Service Provider, Chikwawa CCJP;
- ✓ The One Stop Centre (OSC) in Chikwawa has been revamped;
- ✓ A beneficiary census conducted in villages within the targeted irrigation blocks under first phase. 16,000 households identified.
- ✓ 26 community awareness meetings conducted on agriculture commercialization;
- ✓ Developed Access Benefit Sharing Mechanism Regulations for Malawi currently under review by Ministry of Justice before gazetting. A draft protocol for ABS Mechanism Regulations has been developed for Nsanje District;
- ✓ Opened 33 km of roads in New Lengwe National Park;
- ✓ Conducted animal counts in New Lengwe, Mwabvi and Majete Wildlife Reserves and two surveys for wetland biodiversity monitoring in the Elephant Marsh;
- ✓ Established and trained 11 Natural Resource Committees (123 males, 55 females) under Mwabvi Wildlife Reserve;
- ✓ Promoted three (3) commercial seedling production nurseries along Matandwe Forest Reserve, nursery inputs provided to 15 Village Natural Resource Management Committees, 1000 grafted mango and 2000 bamboo seedlings were provided and planted;
- ✓ 16 new fish ponds constructed and stocked with fingerlings in both Nsanje and Chikwawa Districts, partial harvesting done;
- ✓ Conducted 52 anti-poaching operations and 298 patrols in Lengwe National Park, Mwabvi and Majete Wildlife Reserves to reduce wildlife crimes and illegal logging;
- ✓ Majete Wildlife Reserve trained 263 bee keepers. About 3.5 tonnes of honey was harvested in 2019 season generating more than MK8 million.



(From left-right) - Excavation of the canal route in both ground and aerial views



Construction of a bridge on the canal route



The drained cofferdam at the Intake Site at Kapichira Dam



Drainage works on the canal route



Verification of land use plans in progress



Chikwawa Physical Development Plan on display



A project affected person sitting outside his new house



Fish harvesting at Nambozi Fish Club, T/A Maseya in Chikwawa



Road grading-connecting Old and New Lengwe National Parks



SVTP Community Development Specialist Dr. Stanley Khaila (in blue shirt) presenting items for Lengwe National Park to Minister of Tourism, Wildlife and Culture, Dr. Micheal Usi

For more details visit our website: www.svtp.gov.mw
 Contact: projectcoordinator.doi@svtp.gov.mw; info.doi@svtp.gov.mw

